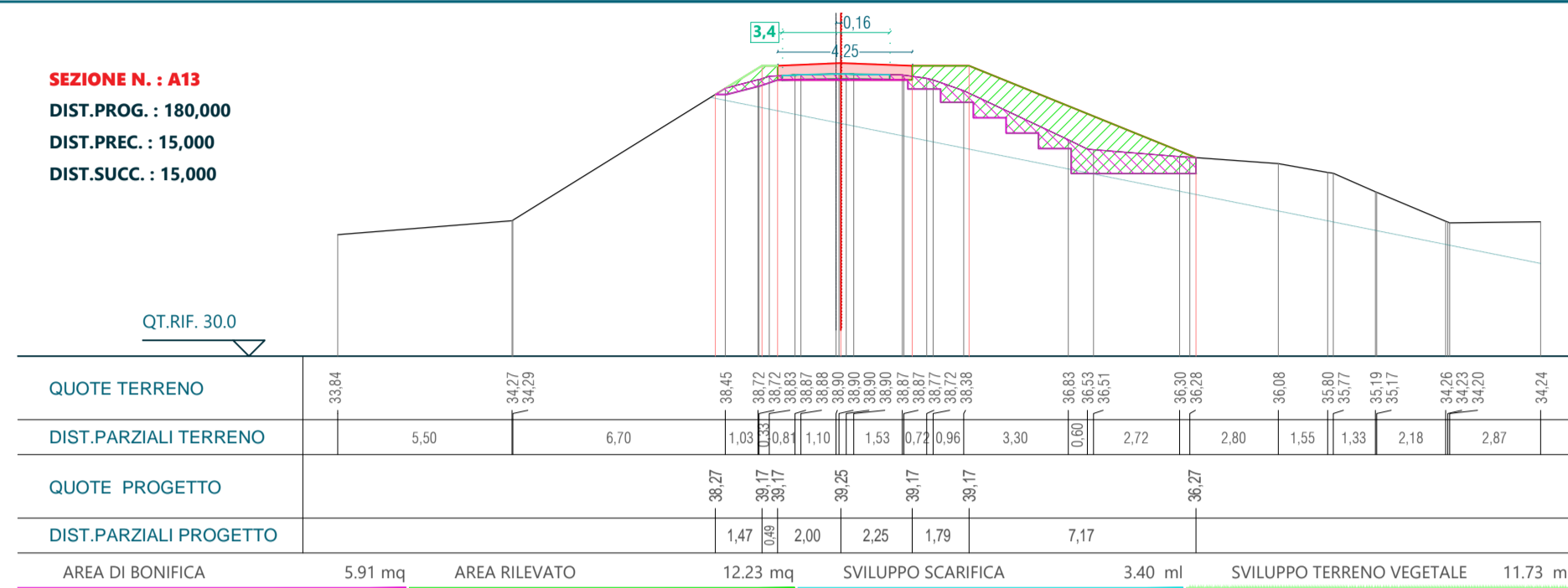
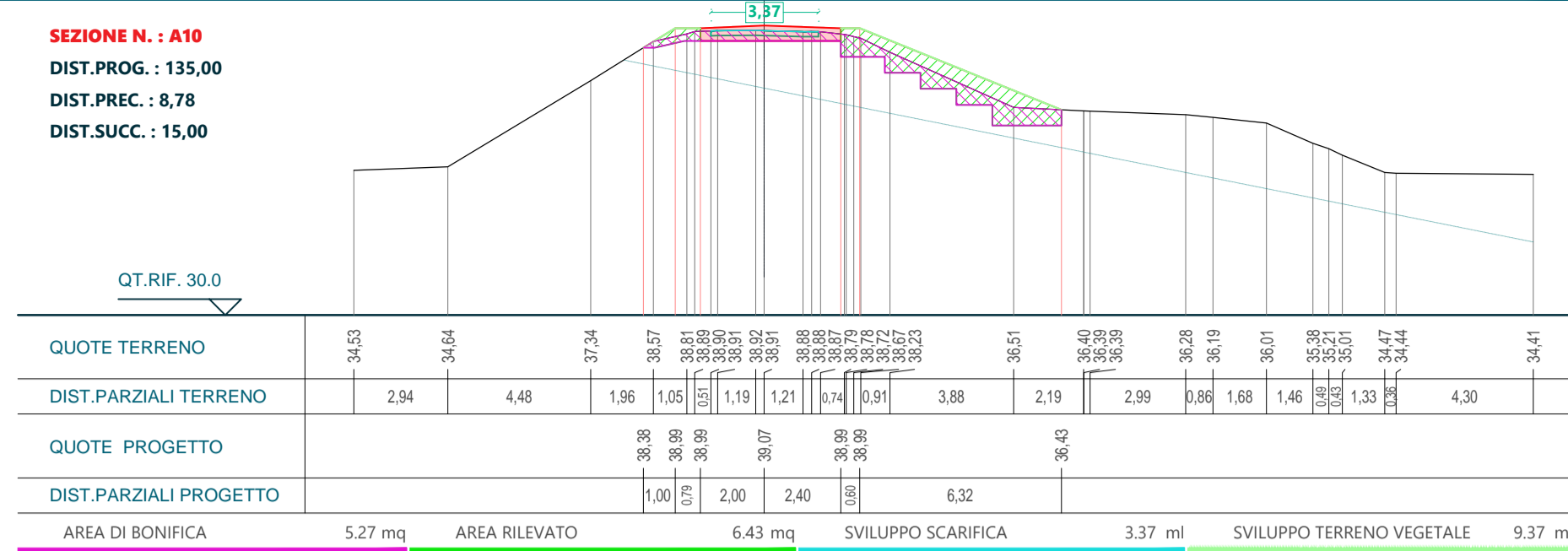
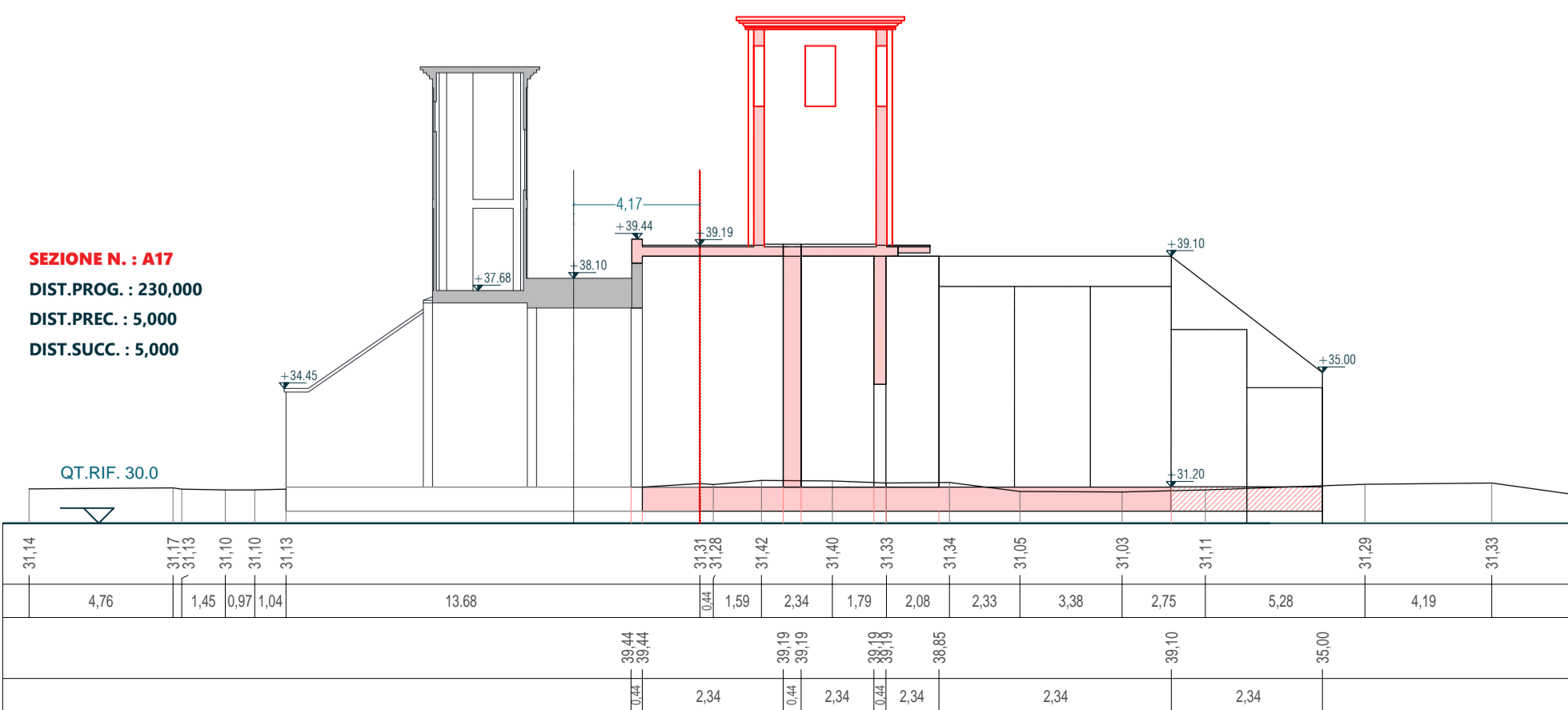
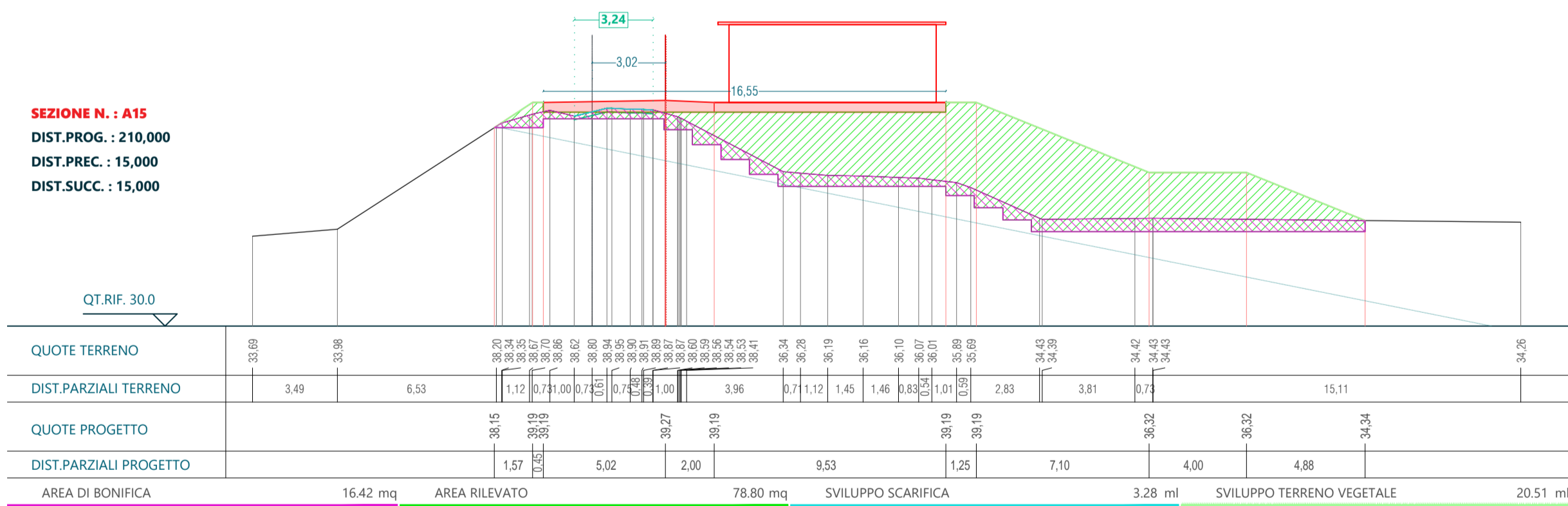
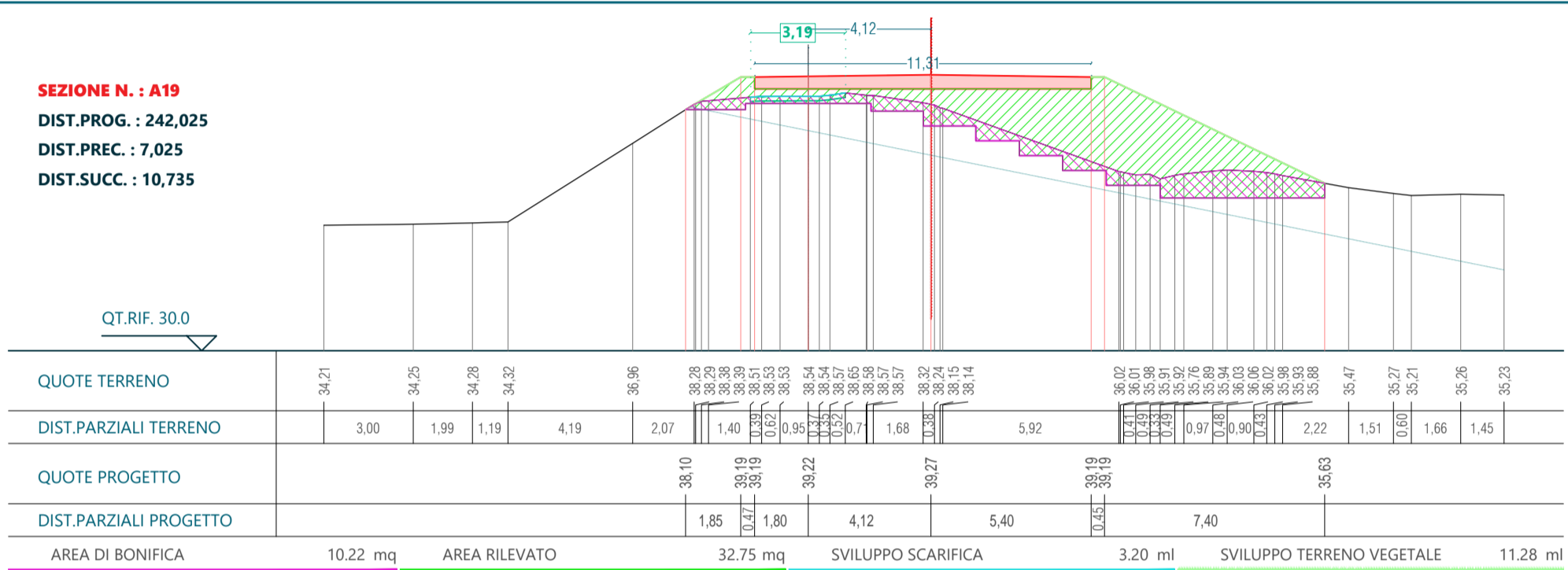
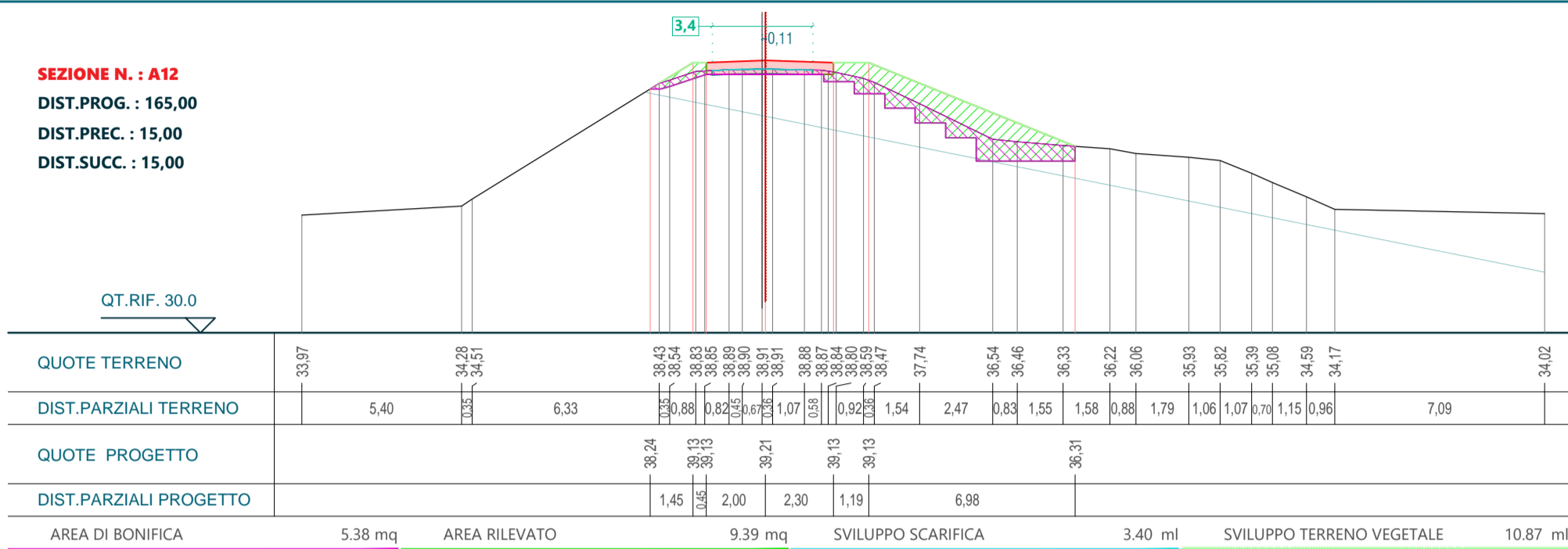
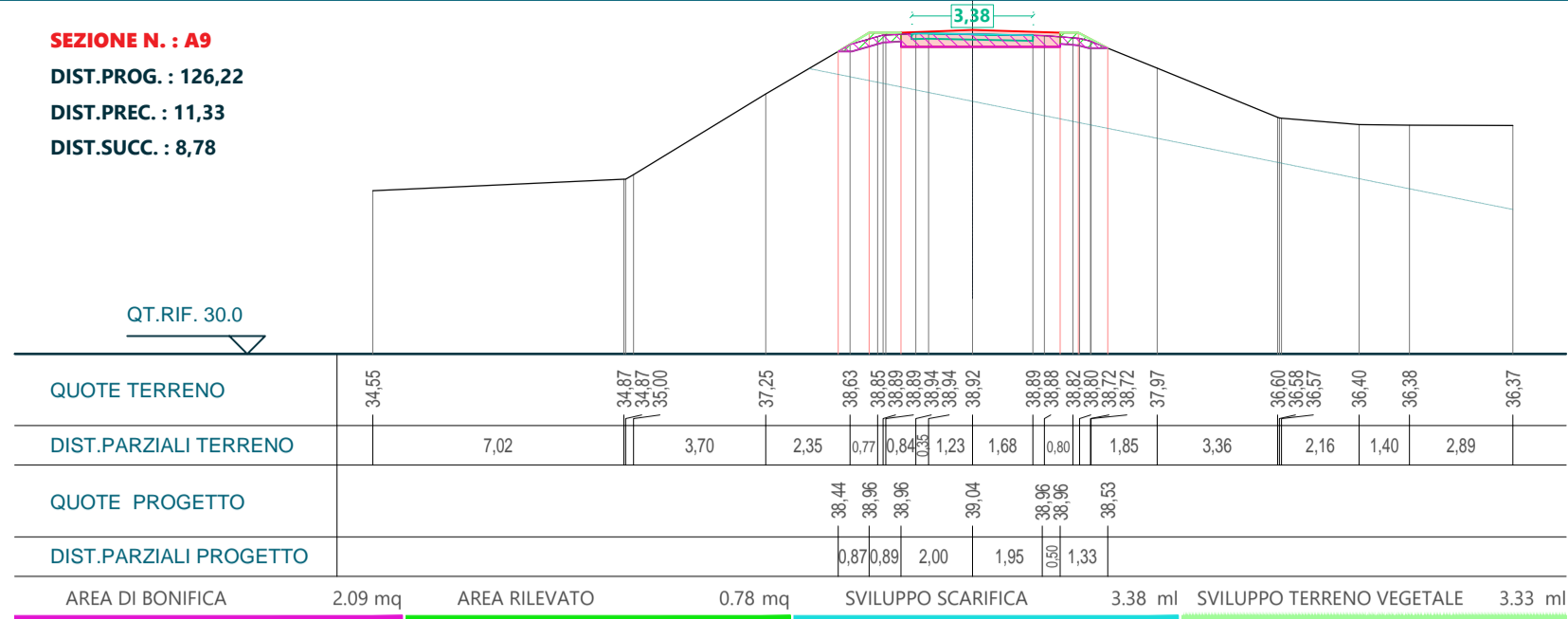
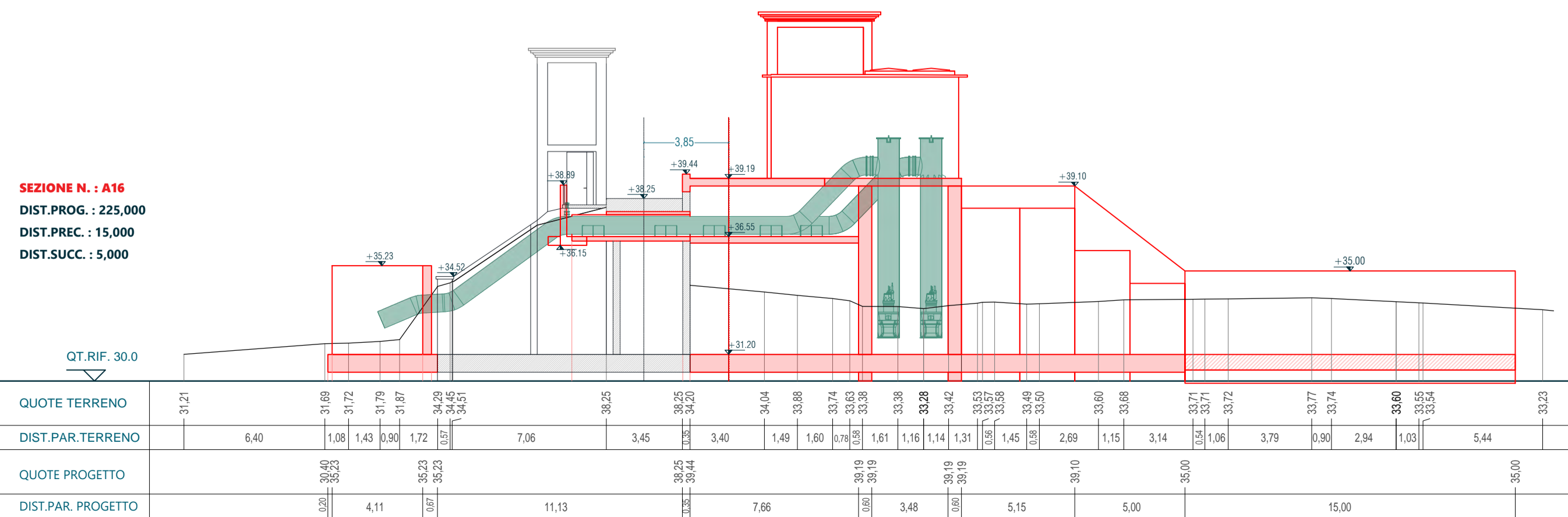
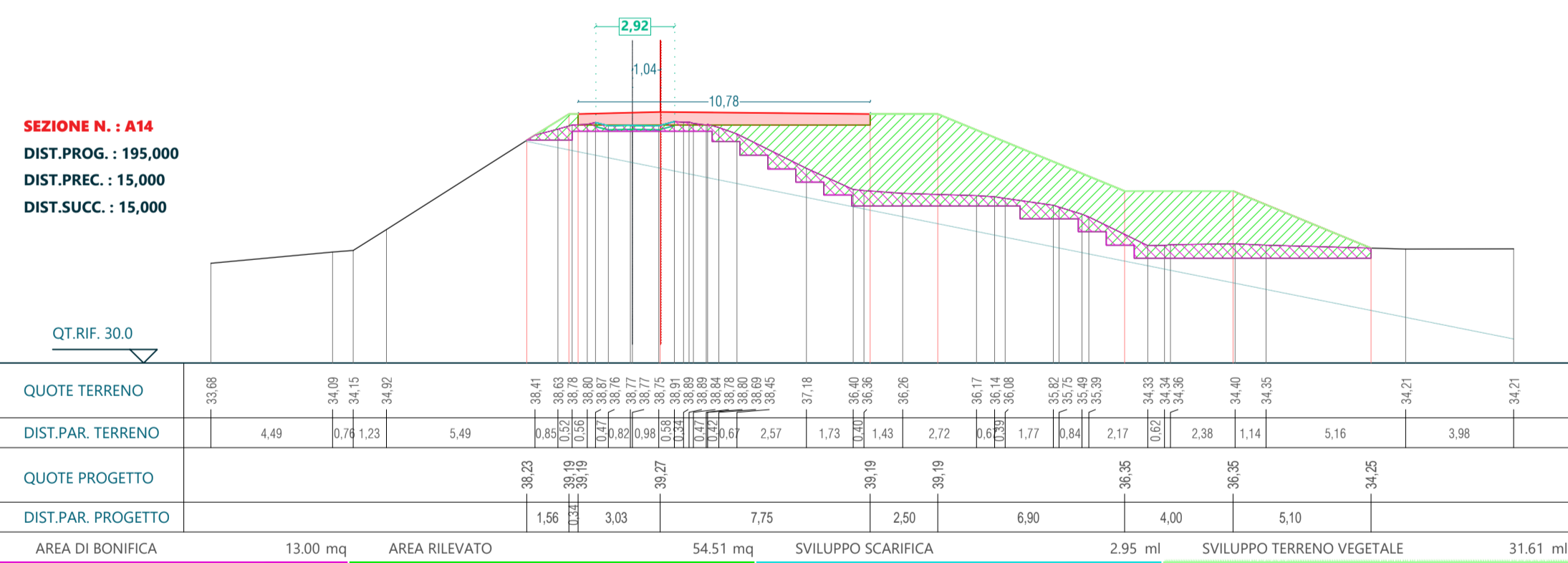
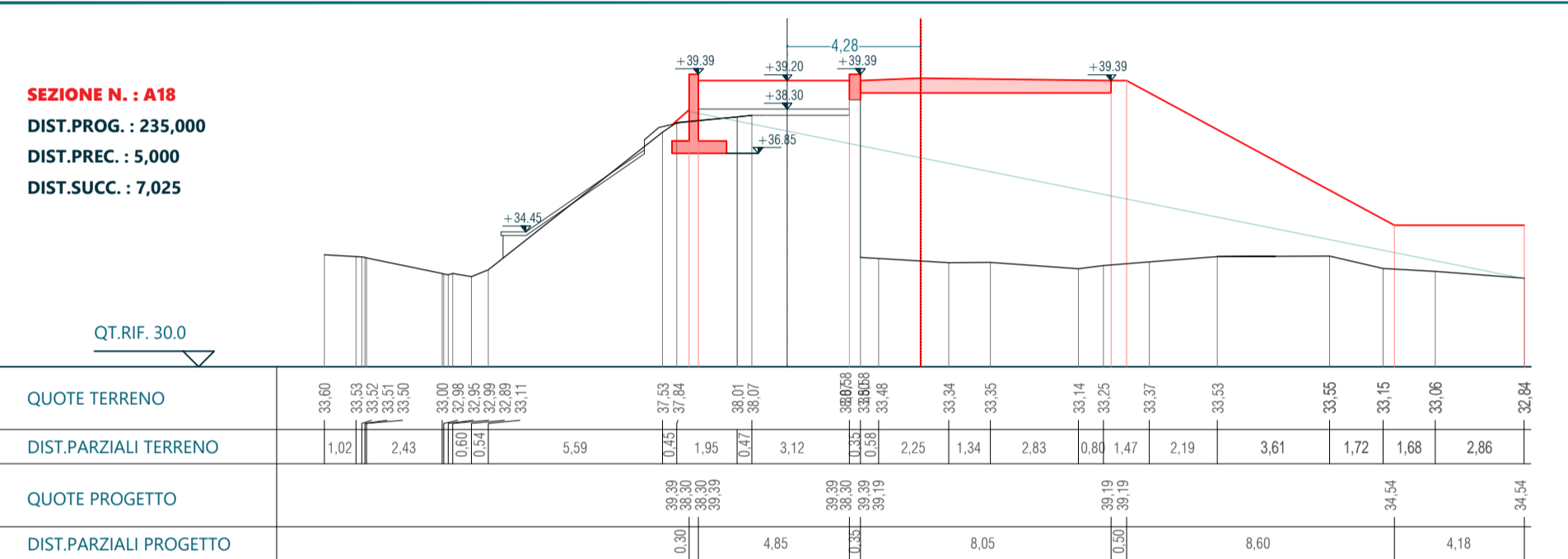
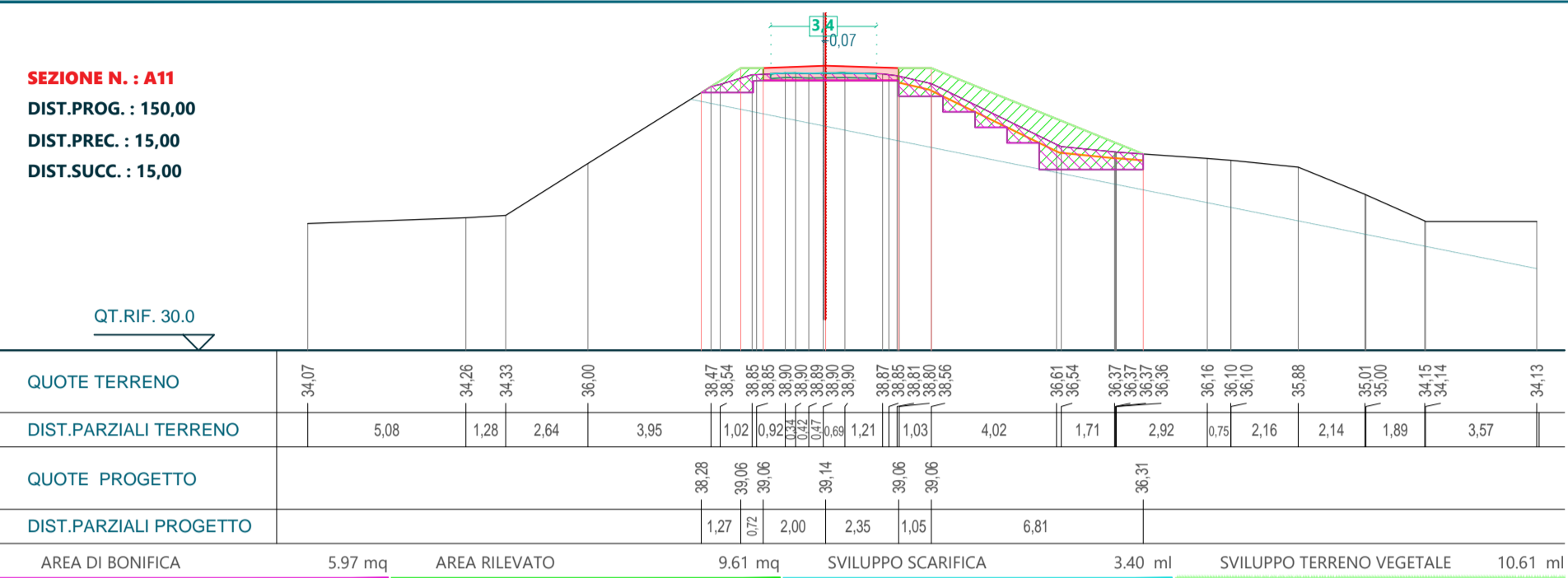


[illegible]

Committente: Agenzia Interregionale per il fiume Po Strada Giuseppe Garibaldi 75 43121 Parma



Commissa:

**CR-E-815 Rifacimento chiavica del Fossadone sull'Argine Maestro sinistro del fiume Po
in Comune di Stagno Lombardo (CR) - Cod OPERA 936 - CUP B53H19000290002 - CIG 82186558A7**



PROGETTO DEFINITIVO

SEZIONI TECNICHE
Arginali : 1 di 2

Scala: 1:200

2020-815-CR-IDR4.1
Tav.

REVISIONE	DATA	DESCRIZIONE	REDATTO	VERIFICATO	APPROVATO
02	28.08.2020	Aut. Paesaggistica	MF	RR	FA
03	23.12.2020	Progetto Definitivo	MF	RR	FA